

INFORMATIONAL MEETING

**Parks and Recreation Advisory
Committee & Friends Group
Youth Council Committee Member Info**

Community Engagement Feb 21st 2019 Presentation



Policy



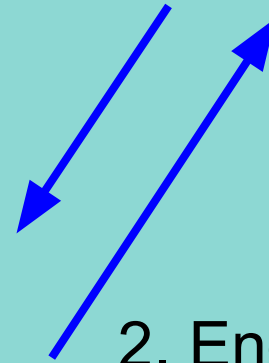
Parks and Recreation Staff
Delivery-Service



Citizen



Advisory Committee



2. Engaging & Representing the Community

1. Supporting:
-Established Plans
-Events & Programs

Advisory Committee Structure

- Regular monthly meeting
 - Dinner Time Meetings Tue Evenings
- Special Chair Assignments for community support: Parks, Trails, Open Space, Outdoor Rec, Events, Nature & Conservation, Athletics, Arts, Health and Wellness, Legacy
- Agenda: based on committee member assignments & suggestions - city staff facilitates agenda creation and distribution
- Actively explore solutions: based on research, & public outreach,
- Active participation: events, programs, and promotion of passive recreation
- 3 Year Term: 2nd term with approval (staggered start $\frac{1}{3}$ as outlined 2-5-3)
 - 3 year Term, 2 year term, 1 year term

Advisory Committee Role

- Consistent community connection
- Word of Mouth Advertising
- Leadership Role for Events including Heritage Days
 - Help recruit, manage, & lead event volunteers
 - Support at least one event/project beyond Heritage Days
- Help build relationships with community partners: businesses, nonprofits, and others for:
 - events, programs, & financial support
- Help evaluate requests for City support for new or updated amenities, and outside events and programs. (Feb & Aug)

Advisory Committee Member Benefits

This is an unpaid VOLUNTEER position. However appointed Advisory Committee members will receive the following:

- A FREE Nibley Fit annual family pass.
- One FREE Nibley Fun Run Registration or one FREE youth or adult sports registration.
- The option to attend the Nibley Staff and Volunteers Summer Party.
- Meals at regular meetings (typically held at dinner time).
- Committee members will be issued Nibley City Recreation Apparel.

Friends of Parks and Recreation Group

- Support advisory Committee Chairs: Parks, Trails, Open Space, Outdoor Rec, Events, Nature & Conservation, Athletics, Arts, Health and Wellness, Legacy
- Serve as a Sub Committee member as needed
 - When and if available by invitation
- Actively support: at least one event, program, or project per year

No Regular Meetings

Advisory Committee Selection

- Online Google Questionnaire
- City staff will compile, and review the information provided by candidates and will recommend assignments
- All the information goes to the Mayor/Council for review
- Committee members are appointed

Events Chair

- Support Heritage Days as Chair, Co Chair, or Assistant Chair
- Support other City Events
- Support an Assistant Events Chair selected from the Nibley Youth Council



Parks, Trails, Open Space, & Outdoor Rec Chair:

- Support park and trail development and improvements
- Support open space initiatives based on master plans
- Support connecting our community to outdoor recreation programs, events, and local amenities
- Support the development of outdoor recreation based programs, events, and amenities.
- Serve as a Liaison to Nordic United



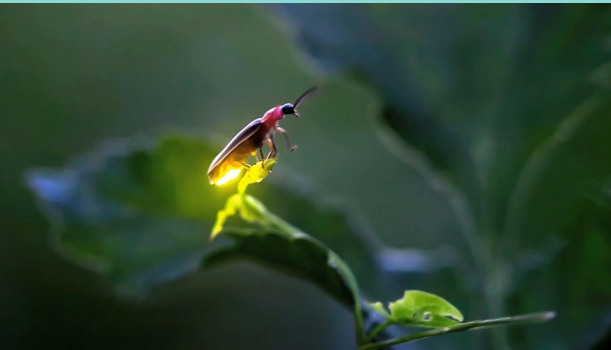
Health and Wellness Chair

- Support fun runs, fitness classes, and health and fitness related events
- Support Holistic Wellness initiatives: nutrition, mental health, and financial wellness



Nature and Conservation Chair:

- Help to preserve and present the city's natural resources including: fireflies, and other wildlife habitats
- Support the development of Nature & Outdoor recreation based programs, events, and amenities.
- Serve as a Liaison to the Nibley Stokes Nature Center and Bear River Land Conservancy



Athletics Chair

- Support Youth and Adult Sports
- Work with staff on equitable athletic field use
- Work with staff on the development of athletic programs
- Be familiar with Youth Sports organizations



Arts Chair:

- Support Performing Arts events including: the Nibley Children's Theatre, Talent show
- Support art shows and other art related events
- Connect with local art organizations and artists

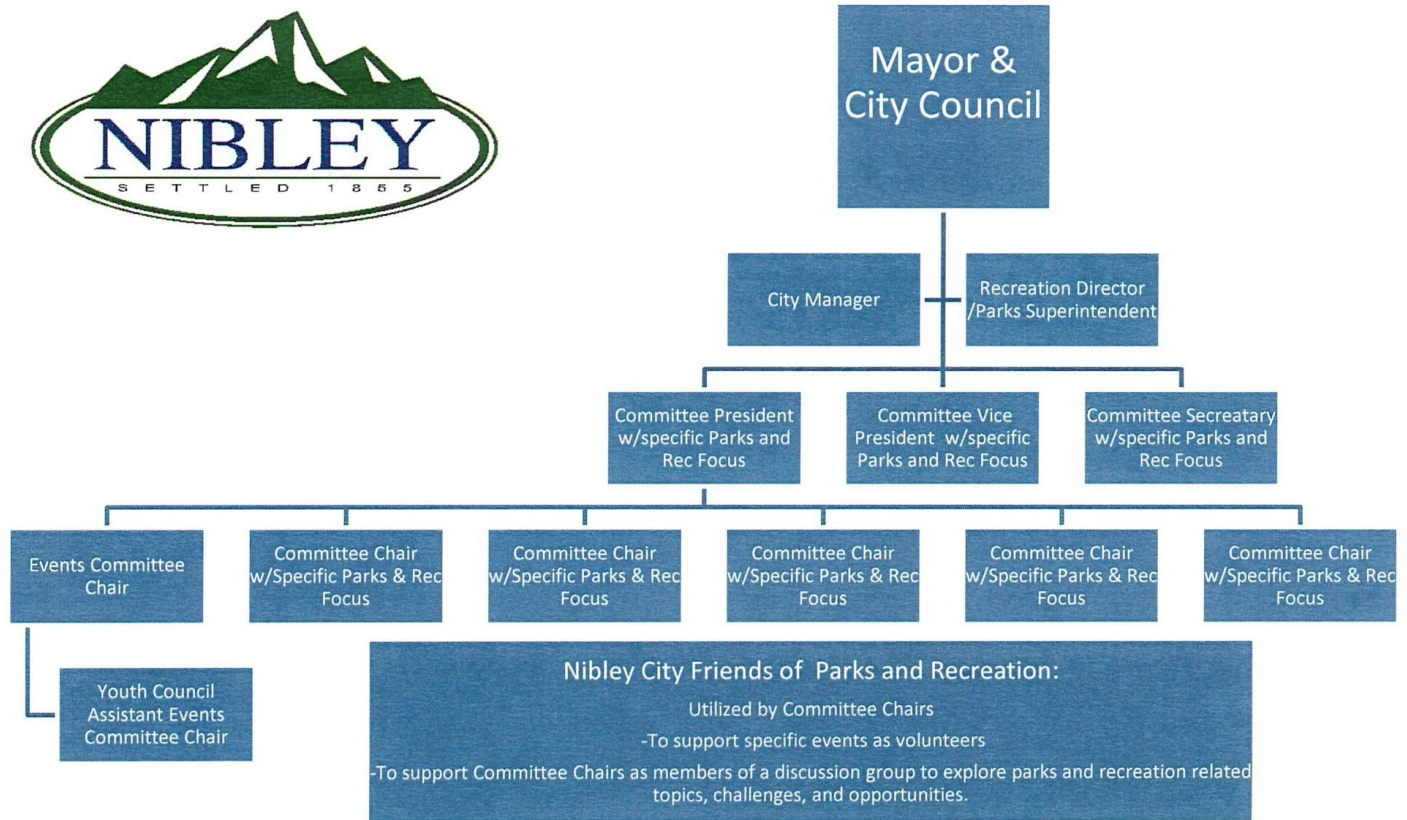
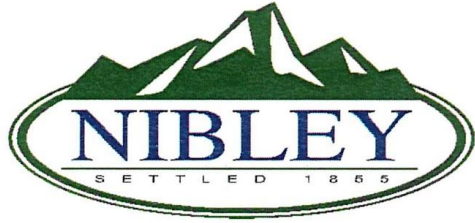


Legacy Chair:

- Help preserve and share the value of our rural Heritage
- Help support the vision and plan for Morgan Farm
- Record and share historic moments
- Support Senior Services and Veteran appreciation for our community



Nibley City Parks and Recreation Advisory Committee Organizational Chart



**Thank you for your interest in moving
Parks and Recreation forward**

**Questions?
Contact Chad Wright
435-752-0431**

